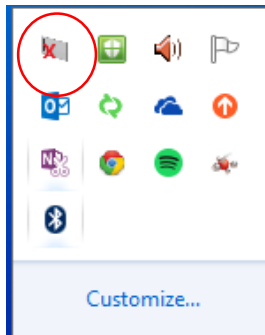


Pairing the Eno Stylus to the Desktop.

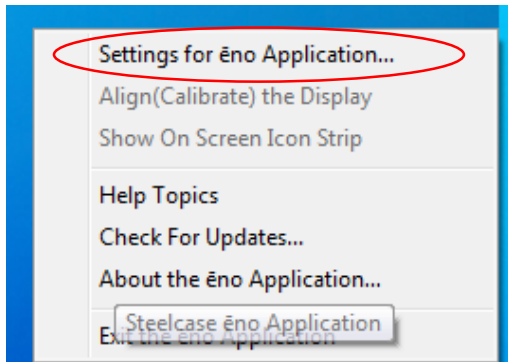
1. First you will want to plug in the BlueTooth Dongle. Give this about 30 seconds to a minute to complete the installation of drivers and software. Your computer will tell you when it is complete and the green light on the USB Dongle will begin to flash.
2. After the dongle is ready, you will then want to pair the pen. You will start by going to the system tray and clicking on the up arrow.



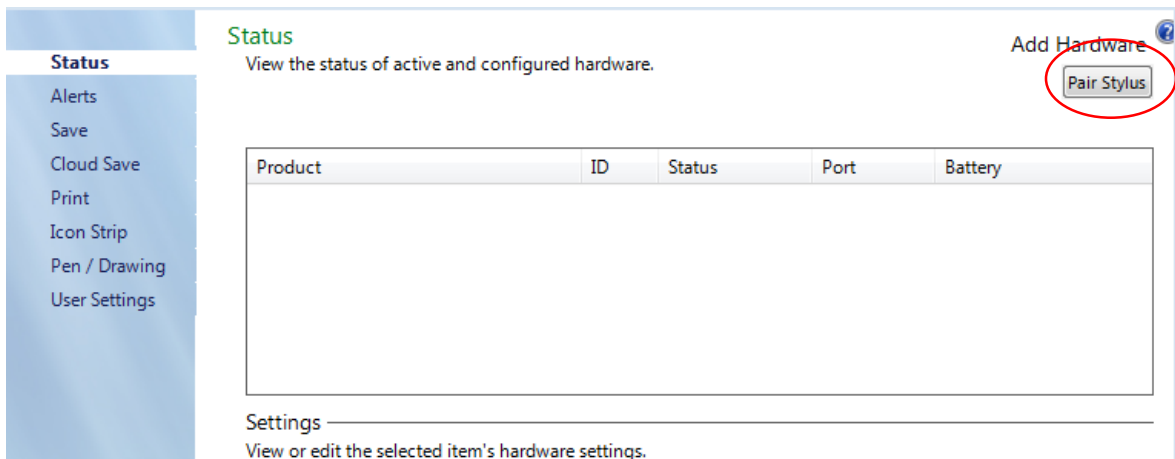
3. Once you have clicked on the up arrow this menu will appear. Click on the eno application.



4. This menu will appear. Click on Settings for the Eno Application.

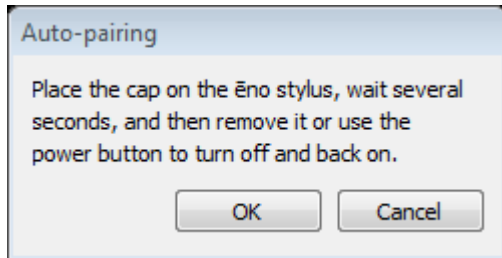


5. This window will open. You will click on Pair Stylus.

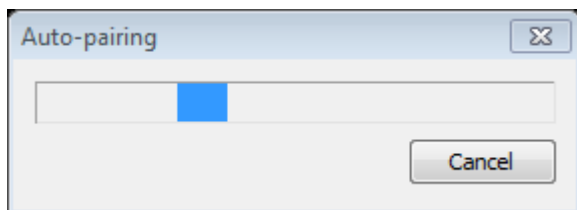


Pairing the Eno Stylus to the Desktop.

6. Once you have clicked on pair stylus then you will get this message. Click OK.



7. Be sure to have the pen uncapped when you are pairing the stylus. This will ensure that the pen can communicate with the USB dongle. After you click OK then the stylus will auto pair.



8. You will receive a message that says the pen has paired successfully. If you receive an error that the pen did not pair, please try steps 5-7 again. If you continue to have trouble and the pen does not pair, please contact your building technician.