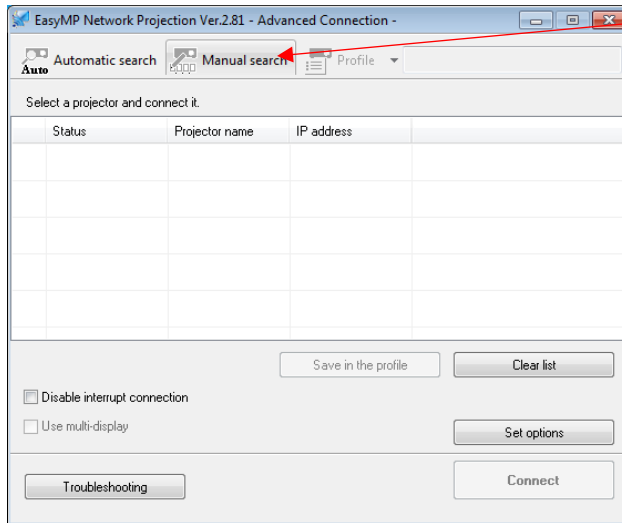


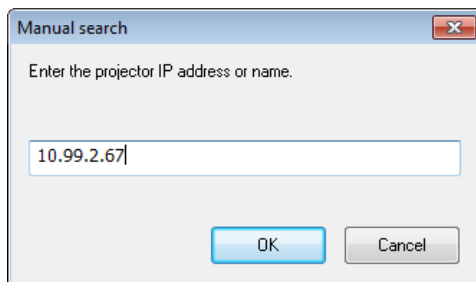
Epson Easy MP Network Projection

First be sure that you have turned your projector ON and that it is on the LAN input.

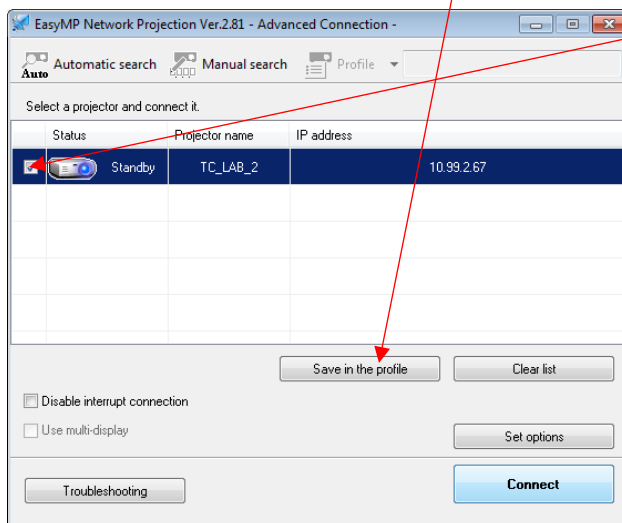
Then, open the Epson Easy MP network Projector Software and click MANUAL SEARCH.



Once you have clicked MANUAL SEARCH, this box will appear. Inside that box type in the IP Address (the 4 numbers separated by a period), then click OK.

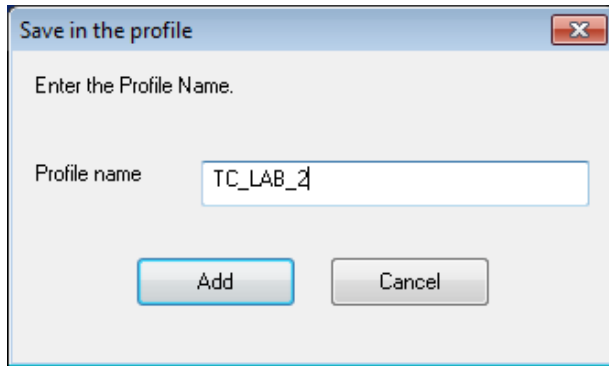


Once you click OK the Projector should appear after a few moments. Click the Check box next to the projector and then click the SAVE IN THE PROFILE button.



Epson Easy MP Network Projection

Once you have clicked save in the profile then this box will open. Give the projector a name that will make sense to you, then click add.



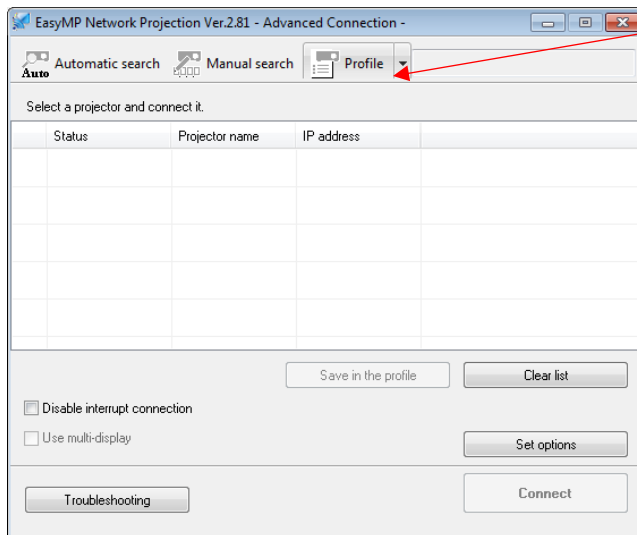
Save in the profile

Enter the Profile Name.

Profile name

Add Cancel

Once this is done your projector will always be saved in the software. Simply click the PROFILE button and select the projector that you added.



EasyMP Network Projection Ver.2.81 - Advanced Connection -

Auto Automatic search Manual search Profile

Select a projector and connect it.

Status	Projector name	IP address

Save in the profile Clear list

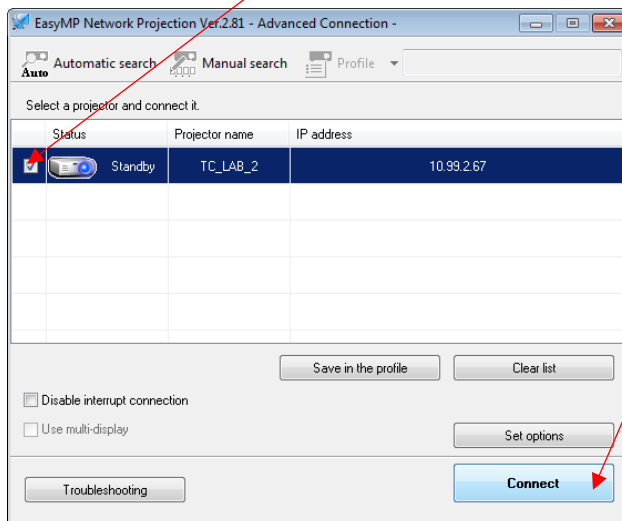
Disable interrupt connection

Use multi-display

Set options

Troubleshooting Connect

Once that is done check the box next to the project or and click CONNECT.



EasyMP Network Projection Ver.2.81 - Advanced Connection -

Auto Automatic search Manual search Profile

Select a projector and connect it.

Status	Projector name	IP address	
<input checked="" type="checkbox"/>	Standby	TC_LAB_2	10.93.2.67

Save in the profile Clear list

Disable interrupt connection

Use multi-display

Set options

Troubleshooting Connect

Epson Easy MP Network Projection